

INDOOR:LSX1.2 LSX1.5 LSX1.6 LSX1.8 LSX2 LSX2.5 OUTDOOR: LSX03.8 LSX06 LSX010

DESIGNED FOR CYLINDER, CONVEX & CONCAVE APPLICATIONS

LSX series LED panels are more flexible and suitable for cylinder, convex & concave applications

FEATURES

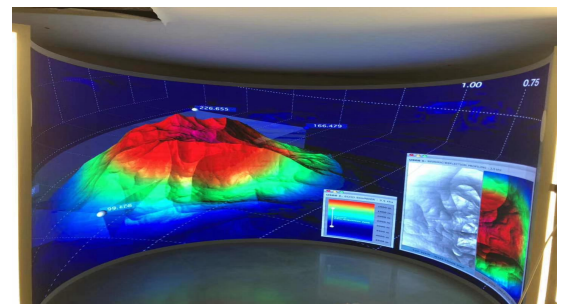
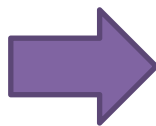
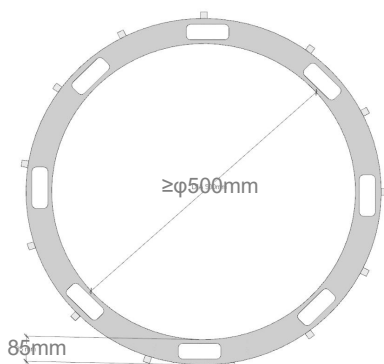


- ◆ Black LED, high contrast ratio, High refresh rate, no ghosting
- ◆ Silicone frame and customized PCB with bigger bended angle
- ◆ Embedded strong magnets front access
- ◆ Perfect alignment no gaps & great flatness
- ◆ Waterproof IP68
- ◆ Anti fire / corrosion material
- ◆ Diameter $\geq 500\text{mm}$

APPLICATION



STRUCTURE



Environment	INDOOR							OUTDOOR		
Product Name	LSX1.2	LSX1.5	LSX1.667	LSX1.8	LSX2	LSX2.5	LSX3	LSXO3.8	LSXO6.67	LSXO10
Pixel Pitch(mm)	1.25mm	1.579mm	1.667mm	1.875mm	2mm	2.5mm	3mm	3.81mm	6.67mm	10mm
LED Type	SMD1010	SMD1212	SMD1010	SMD 1515	SMD 1515	SMD 2121	SMD 2121	SMD 1921	SMD3535	SMD3535
Pixel Density (pixels/m2)	640000	401111	360000	284,444	250,000	160,000	111,111	68,644	22,478	10,000
Cabinet Size (W x H x D)	480*480							304.8*304.8	320*320	320*320
Modules/Cabinet (W x H)	2*4							1*1	1*1	1*1
Module Resolution	192*100	152*76	144*72	134*67	120*60	96*48	80*40	80*80	48*48	32*32
Module Size (W x H)	240*120	240*120	240*120	240*120	240*120	240*120	240*120	304.8*304.8	320*320	320*320
Power Consumption Maximum (W/m2)	750	750	750	750	600	600	600	900	900	900
Power Consumption Typical (W/m2)	250	250	250	250	200	200	200	300	300	300
Line Voltage	AC110-240V ,50-60HZ									
Cabinet Material	Iron									
Brightness Max, Calibration On (cd/sq))	≥600	≥600	≥600	≥600	≥600	≥600	≥600	≥5000	≥5000	≥5500
LED Refresh Rate	3840	3840	3840	3840	1920	1920	1920	3840	3840	3840
Color Temperature Adjust (k)	2000~9000									
Viewing Angle (Horizontal/Vertical °)	120° / 120°	120° / 120°	120° / 120°	120° / 120°	120° / 120°	120° / 120°	120° / 120°	120° / 120°	120° / 120°	120° / 120°
Frame Rate	50/60HZ									
Gray Scale Processing	14+2 bit									
Service Access	front									
LED Lifetime, Typical	100,000H									
Runtime Duty Cycle (Hours/Day)	24/7									
Storage Temperature/ Humidity (degrees F/C) 10-85% relative humidity, non-condensing	-20°C~45°C							20°C~60°C		
Opertating Temperature/ Humidity (degrees F/C) 10-85% relative humidity, non-condensing	-20°C~45°C							20°C~60°C		
IP Rating (F/R)	IP20/IP20	IP20/IP20	IP20/IP20	IP20/IP20	IP20/IP20	IP20/IP20	IP20/IP20	IP68/IP65	IP68/IP65	IP68/IP65
Drive	1/48 scan	1/38 scan	1/36 scan	1/32 scan	1/30 scan	1/24 Scan	1/24 Scan	1/10 Scan	1/6 Scan	1/2 Scan